



App Manual

Introduction

Eliv is the application developed by Rete di Imprese Luce in Veneto dedicated to the control of ELIV luminaires/dimmers equipped with Wifi technology.

Installation - network requirements

Make sure you have installed your Eliv devices correctly.

To work, the devices require the presence of a 2.4 GHz Wifi network equipped with a B or G band.

Make sure DHCP is enabled on your router.

Make sure you don't have any firewall rules on your router preventing communications on UDP port 7777.

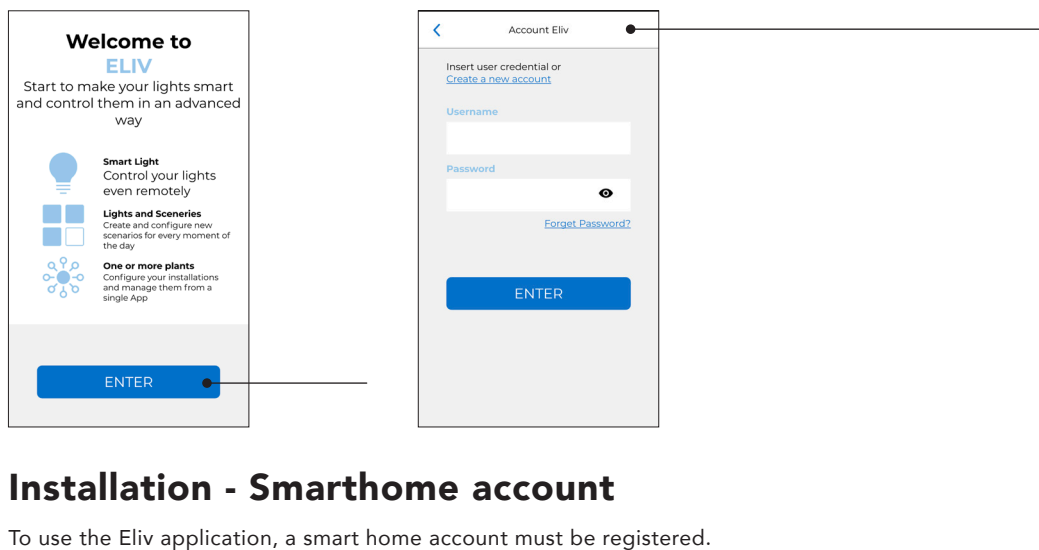
Make sure you don't have firewall rules on your router that prevent multicast communications on address 224.0.0.251.

Make sure you do not have the client isolation option enabled on your router.

Make sure you have good wifi coverage in the place where you have installed your devices.

Installation - wizard

At the first start of the application, the user will be guided step by step to configure his Eliv devices



Installation - Smarthome account

To use the Eliv application, a smart home account must be registered.

You can register an account directly from the Eliv application by pressing the Register a **new account** button during the procedure guided or by navigating on any browser at the following address.

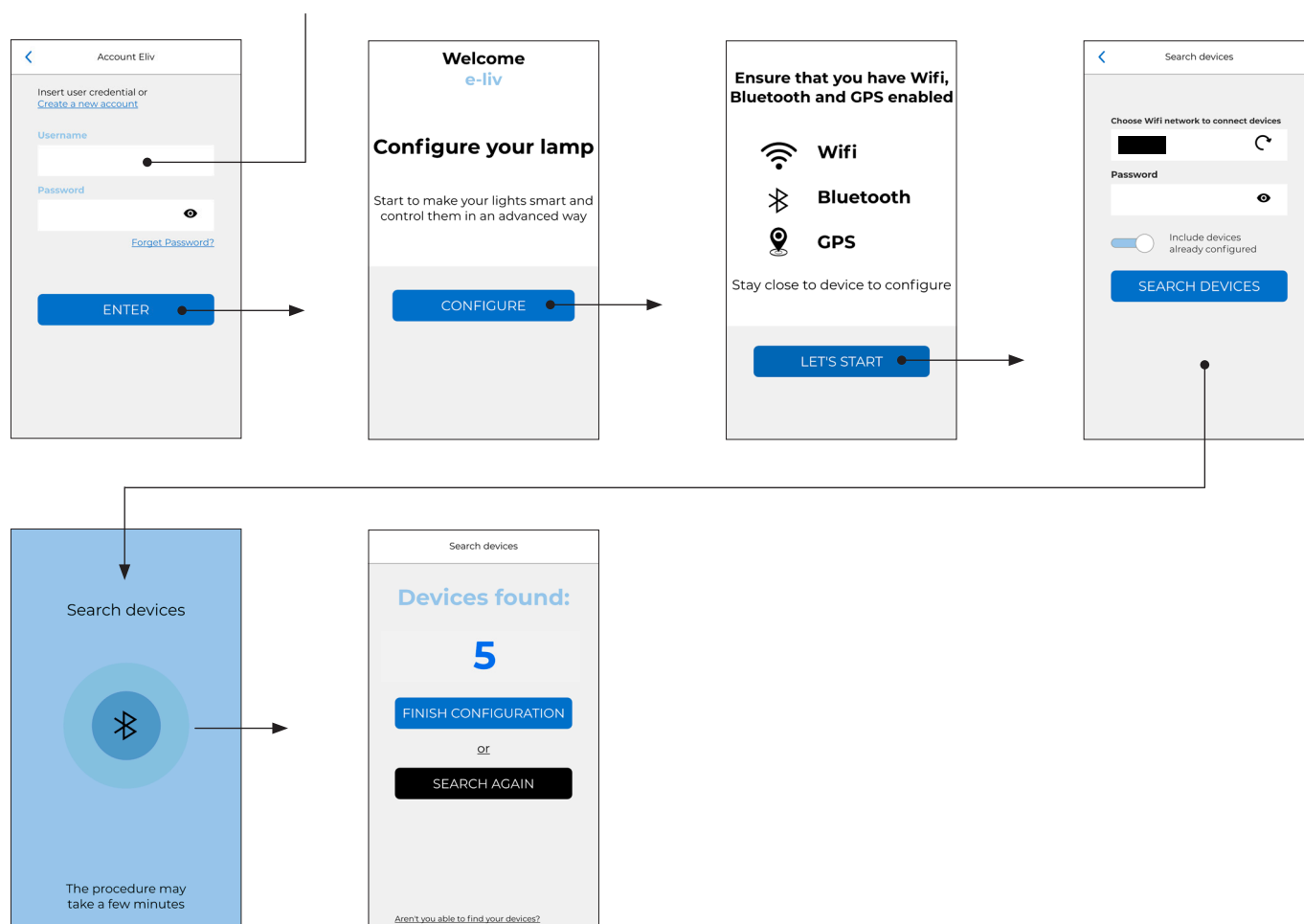
<https://smarthome.elivsystem.com>

You will need to select a username, a password and provide your name, surname and email address. The procedure will send an email with an activation link to the selected email address. Click on the link to confirm your account and proceed with the configuration of your devices.

Installation - networking of devices

Enter your username and password in the appropriate fields and press login.

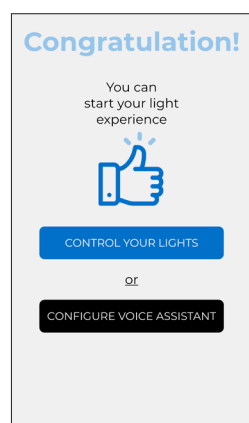
Follow the instructions that appear on the screen, make sure you are connected to the wifi network in which you want to insert your devices and that you have the **network name (SSID) and password**.



Once the procedure is completed, the number of devices detected and correctly associated with the wifi network will be displayed. If you can't properly detect all of your devices, the main causes are generally poor wifi or Bluetooth coverage or the wrong network password.

To solve:

- Check the wifi network name and password.
- Move your phone closer to the device.
- Check that the prerequisites for installation specified at the beginning of the manual have been met and that the wifi coverage is enough.
- Press search again to search again or finish configuration to go on.



Press the control your lights button if you want to use your devices right away.

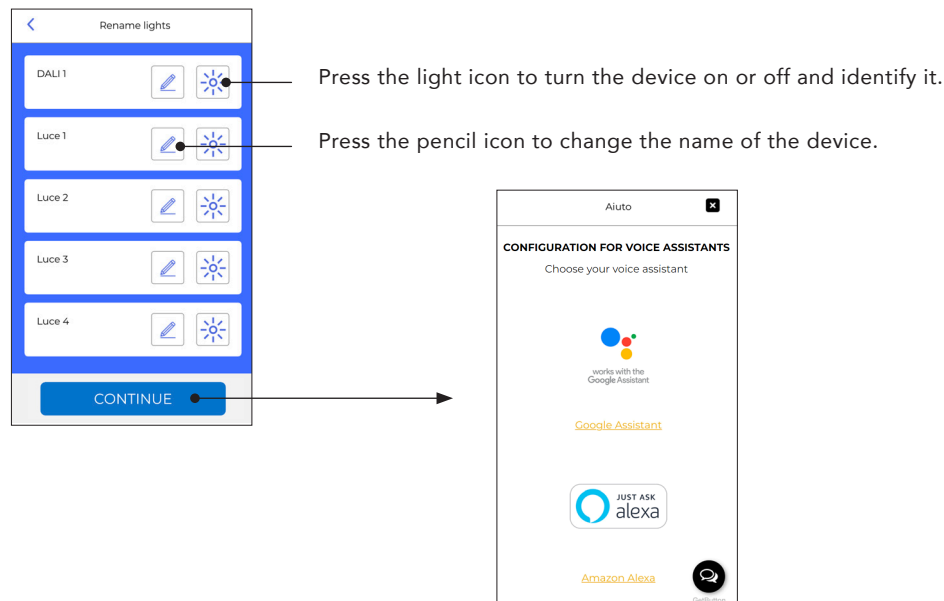
Press the configure voice assistant button to view instructions on how to configure the voice assistant Google Home and Amazon Alexa assistants.

Assistants can also be enabled later.

Installation - voice assistants

To configure the voice assistants correctly, you need to rename the devices first.

To avoid speech recognition problems it is good practice to use simple names formed by one word (eg: kitchen, living room, bathroom and avoid complex names such as "dining room light"). A guide for configuring Google Home or Amazon Alexa will be displayed, follow the steps on the screen.

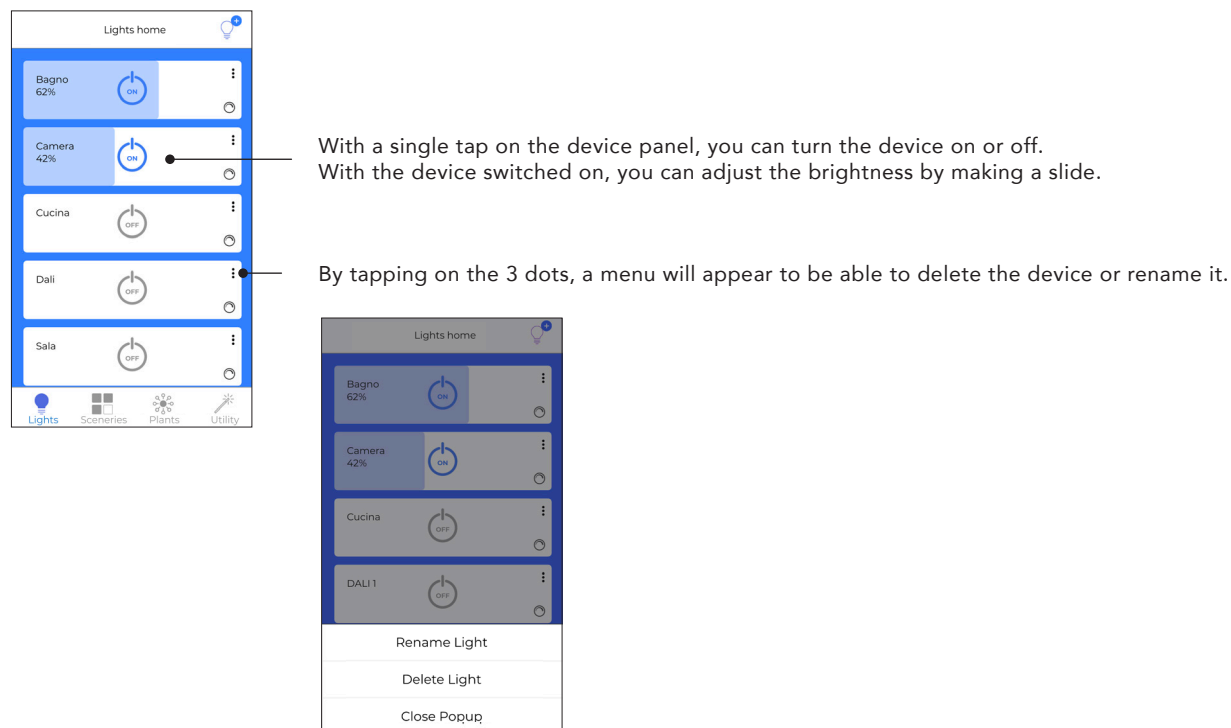


When you have successfully renamed all your devices, press the continue button and select the assistant you want to configure.

A guide for configuring Google Home or Amazon Alexa will be displayed, follow the steps on the screen.

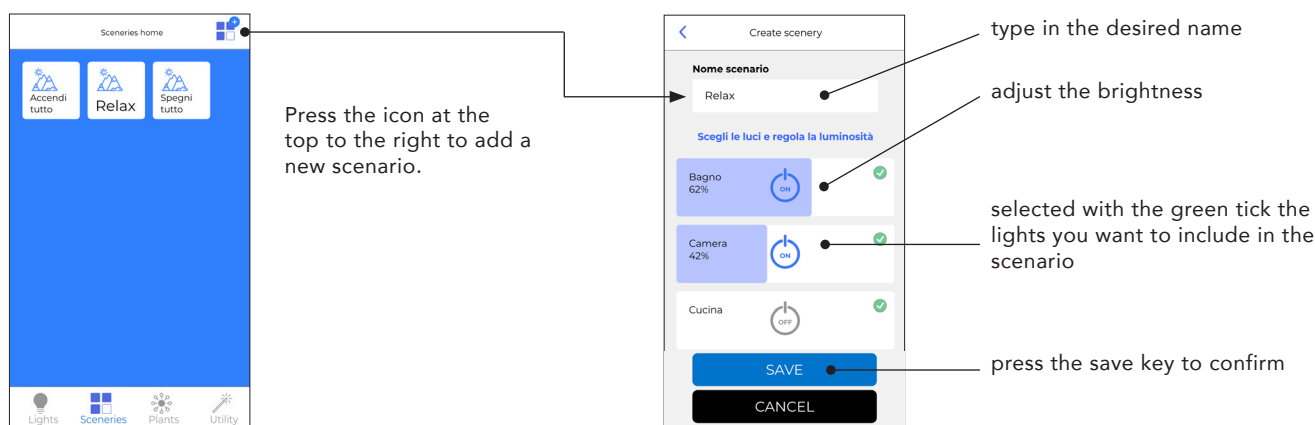
Basic use - light control

In the lower part of the application, 4 tabs will be displayed: Lights, Sceneries, Plants, Utilities.



Basic use - sceneries

To send the scenario command to the system, just tap on the icon corresponding to the desired scenario. When the system is first configured, 2 scenarios will be created automatically, turn everything on and off.



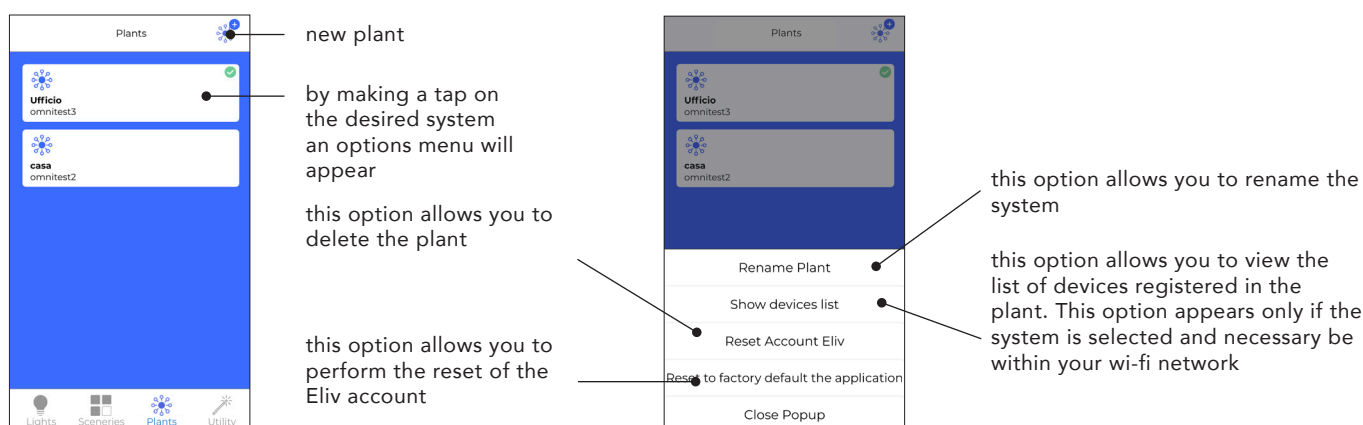
Basic use - implants

Eliv allows you to manage multiple systems at the same time, eg: home, office, etc.

To add a new system, connect to the wifi network of the new system and press the icon at the top right to start the device configuration procedure identical to that carried out at the first start of the application.

Attention each Eliv account manages only one Eliv system, so if you want to use multiple systems you will need to set up an account for each plant.

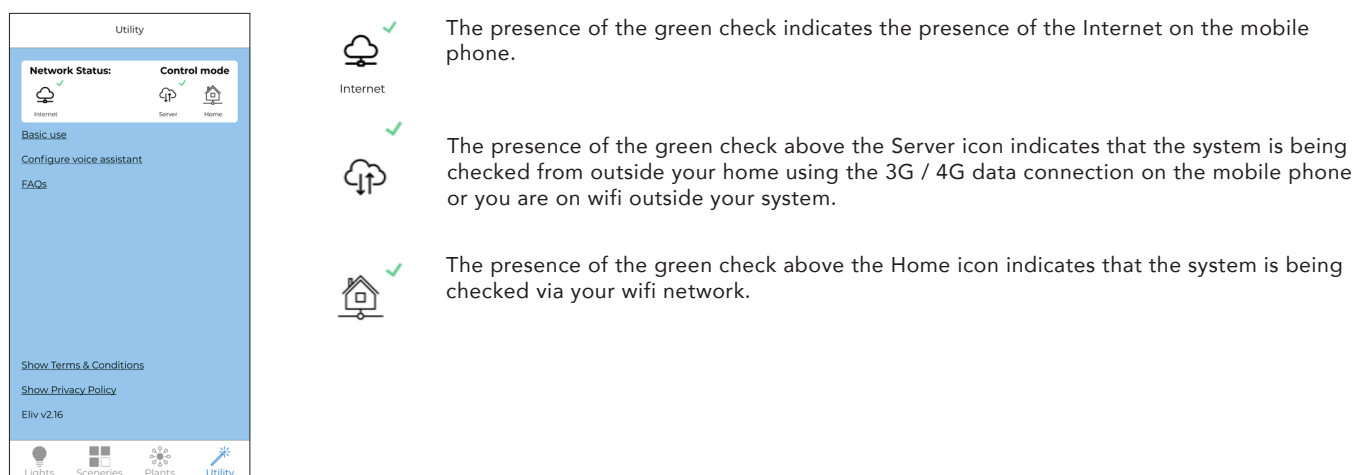
For account registration you can use the same email account used for other smart home accounts.



Basic use - implants

Eliv can control your system both when you are at home within your wifi network and when you are away from home.

In the utility tab, the status icons indicate the connection status of Eliv.

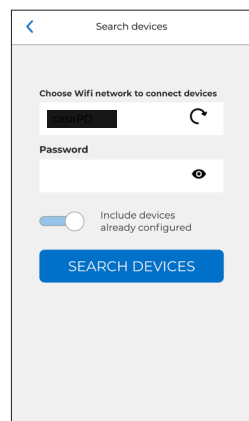


Eliv account sharing or installation on a new mobile phone

If you want to share the Eliv account of your system with one of the members of your family (eg: wife, children), or if you have changed your mobile phone and want to restore Eliv settings follow this procedure:

1. Keep your credentials handy;
2. Connect the new mobile phone to your wifi network;
3. Install the Eliv app;
4. At the first start, enter your credentials, the system configuration procedure will be started.

Make sure that the Detect devices already configured flag is enabled, follow the steps on the screen when the procedure is finished you will have your system configuration.



Basic use - light control

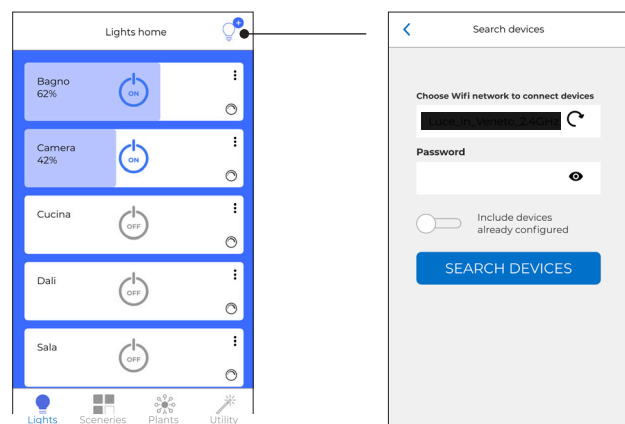
Connect with your new mobile phone to your wifi network.

Make sure you have selected your implant from the Implants tab.

Make sure the device to be added is turned on.

Press the icon at the top right of the lights menu and follow the configuration procedure.

Make sure that the Detect devices already configured flag is disabled, follow the steps on the screen at the end of the procedure you will find the new device in the Lights list.



System control via browser

You can check your system by connecting to the website <https://smarthome.elivsystem.com>. Enter your credentials and press the Login button.

Eliv Smart Home - Ver. 3.19

Login

Enter your credentials or or [Register a new Account](#)

Username:

e-liv

Password:

Login

[Lost Password?](#)

Rete di Imprese Luce in Veneto IT04960540286 [Check terms of use and privacy policy](#)

Eliv Smart Home - Ver. 3.19
Your plant situation
Settings
Change Password
Authorizations
Statistics
Activities
Logout

Welcome e-liv

Your plant situation

Plant Id: **uz5yv9q392rvmgrhgybgmdilk98zd2**

Last synchronization: **March 19, 2021, 12:15 p.m.**

#	Group	Status	Refresh
2	Ufficio Destra Bianco Freddo	<div></div> OFF	Turn On
3	Ufficio Sinistra Bianco Freddo	<div></div> OFF	Turn On
4	Ufficio Sinistra Bianco Caldo	<div></div> OFF	Turn On
5	Ufficio Destra Bianco Caldo	<div></div> OFF	Turn On
7	Lampada Eleonora	<div></div> OFF	Turn On

Rete di Imprese Luce in Veneto IT04960540286 [Check terms of use and privacy policy](#)

the slider affects the brightness

the key switches the lights on and off

Configure the restoration of the system status in the event of a blackout

Using web access, go to the settings menu and enable the check on the flag to restore the system status. This option is enabled by default on each newly registered account.

The screenshot shows the Eliv Smart Home web interface. At the top, there is a navigation bar with the text "Eliv Smart Home - Ver. 3.19" on the left and several menu items: "Your plant situation", "Settings", "Change Password", "Authorizations", "Statistics", "Activities", and a "Logout" button. Below the navigation bar, a "Settings" button is highlighted. Underneath, there are two checkboxes: "Restore plant after a blackout" and "Consent to send emails and commercial communications". At the bottom of this section is a blue "Confirm" button.

Smarthome account password change

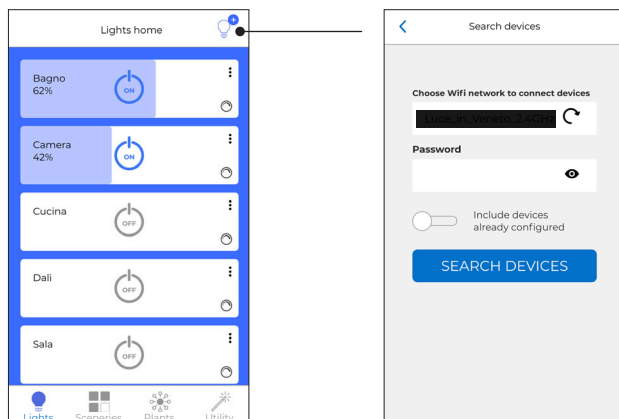
Using web access, go to the change password menu, enter the old password and confirm the new password.

Warning! Changing the password will cause all devices to disconnect from the server causing failure operation of voice assistants and remote control.

The screenshot shows the "Change Password" form in the Eliv Smart Home web interface. The navigation bar is the same as in the previous screenshot. Below it, a "Change Password" button is highlighted. The form contains three input fields: "Old Password:", "Password:", and "Confirm Password:". Below these fields is a red warning box with the text: "Warning! Changing password will cause devices disconnection! Associate them again to your profile with the mobile app in order to use again this service". At the bottom of the form is a blue "Change Password" button.

To re-associate the Eliv account on your devices:

- Connect to your wifi network;
- Open the Eliv app and enter the new credentials that the app will request;
- Press the icon at the top right of the lights menu and follow the configuration procedure;
- Make sure that the Detect devices already configured flag is enabled, follow the steps on the screen.



Forgot account password

Connect to the site <https://smarthome.eliv.com> and click on the forgotten password.

Enter the email address associated with the account and press reset password, an email will arrive with instructions for resetting the password of the account.

Eliv Smart Home - Ver. 3.19 Login

Enter your credentials or or [Register a new Account](#)

Username:

Password:

Login [Lost Password?](#)

Remove authorization from Google or Amazon to log into your plan

If you want to remove the authorization for voice assistants to access your system from the web panel, click on permissions and press the revoke button on the authorization you want to cancel.

Eliv Smart Home - Ver. 3.19 Your plant situation Settings Change Password Authorizations Statistics Activities Logout

Authorizations: 1

Code	Application	Created	Updated	Expires	Revoke
jM0eJfEw2OL0p3EaHiKtNUf9PNGaEb	Alexa	March 12, 2021, 12:50 p.m.	March 24, 2021, 7:34 p.m.	March 25, 2021, 5:34 a.m.	Revoke

Smarthome account password change

You can find the statistics of your system in the web panel in the statistics and/or activity menus.

Eliv Smart Home - Ver. 3.19 Your plant situation Settings Change Password Authorizations Statistics Activities Logout

Statistics

☐ Include light turned off in the statistics

Group pwm

All Groups

Search

pwm ↑ ↓	Duration ↑ ↓	%Duration ↑ ↓
255	183 Hours 3 Minutes	18.60%
224	5 Hours 5 Minutes	0.56%
221	1 Minutes	0.00%

Eliv Smart Home - Ver. 3.19 Your plant situation Settings Change Password Authorizations Statistics Activities Logout

Activities

Group pwm

Search

date ↑ ↓	Group ↑ ↓	pwm ↑ ↓	Duration ↑ ↓
March 24, 2021, 7:34 p.m.	Lampada Antonella	0	1 Hours 1 Minutes
March 24, 2021, 7:34 p.m.	Lampada Antonella	255	1 Minutes
March 24, 2021, 7:34 p.m.	Ufficio Destra Bianco Freddo	0	1 Hours 1 Minutes
March 24, 2021, 7:34 p.m.	Ufficio Sinistra Bianco Freddo	0	1 Hours 1 Minutes

Application reset

Delete the application from the mobile phone or:

Go to the systems menu and clicking on each system press the delete system button from the popup menu. When you arrive at the last system, the item Delete all data and restore the application will be displayed.

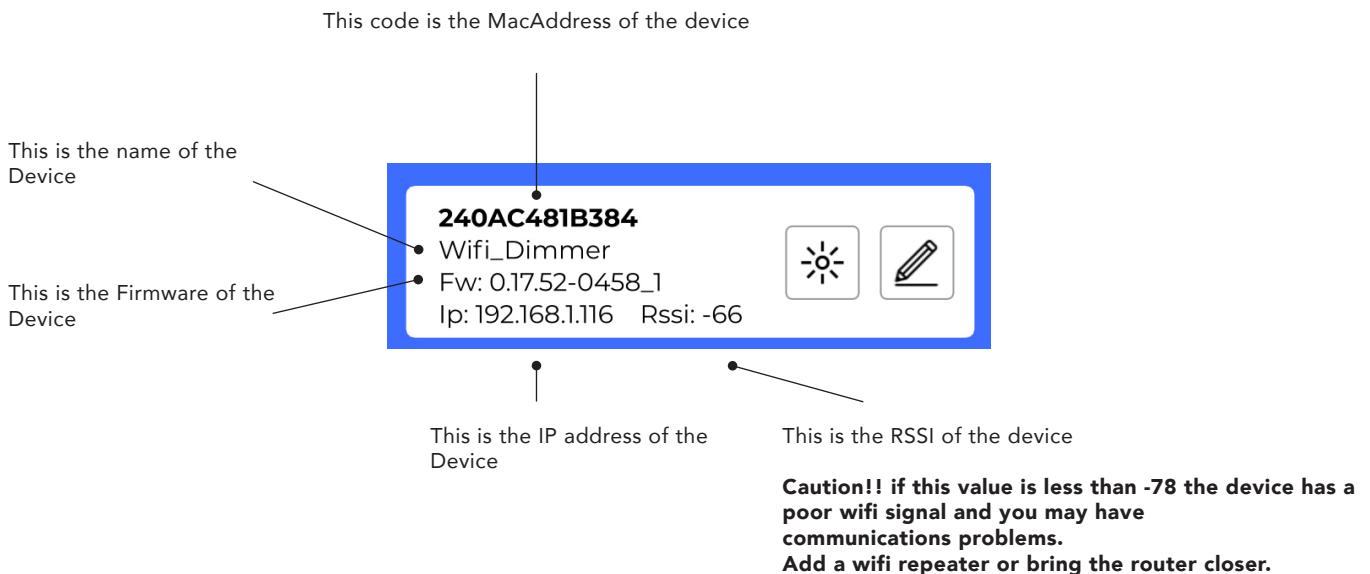
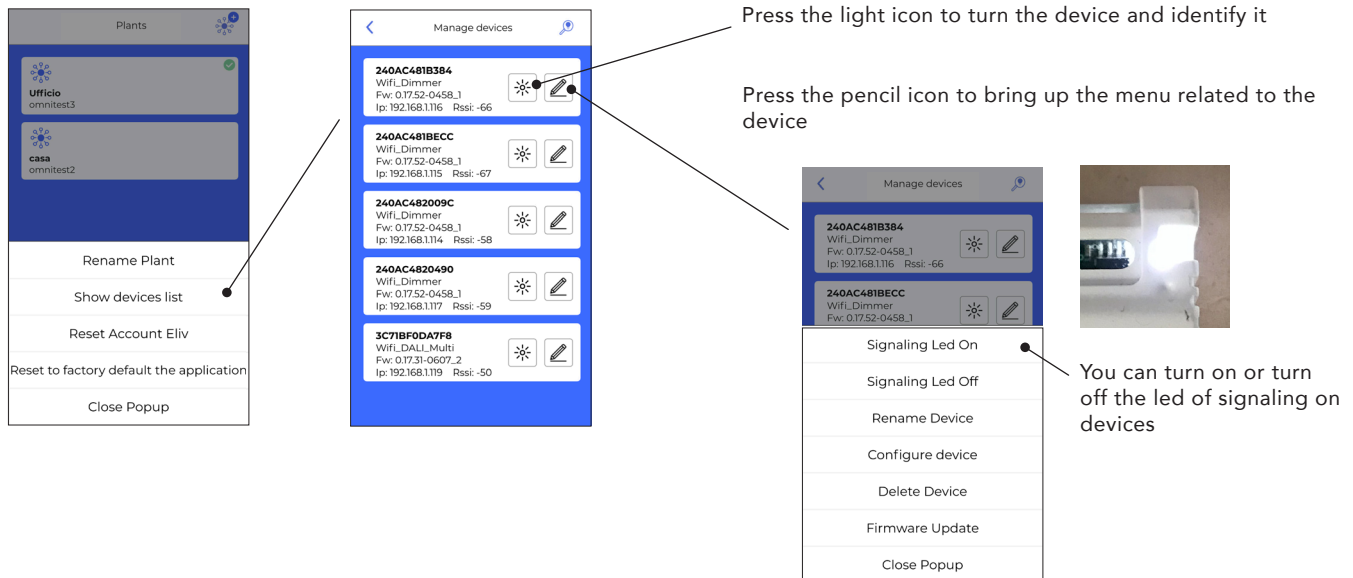
Change of wifi access credentials

In case you need to change the wifi password or change the router, follow the instructions for resetting the application.

- Turn off the system;
- Wait a few moments for all the power supplies of the ELIV devices to be completely discharged;
- Turn the system back on;
- Follow the Eliv account sharing procedure on page 5.

Change of wifi access credentials

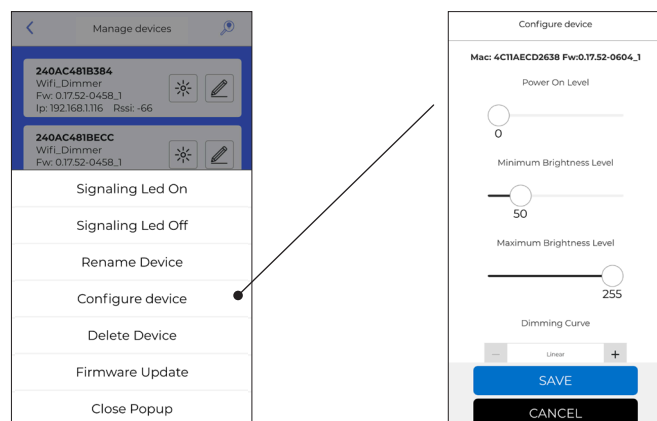
- Connect to your wifi network;
- Make sure you have selected your system from the systems menu;
- Tap on the system and select view device list.



Single device configuration.

Minimum, maximum and start level adjustment

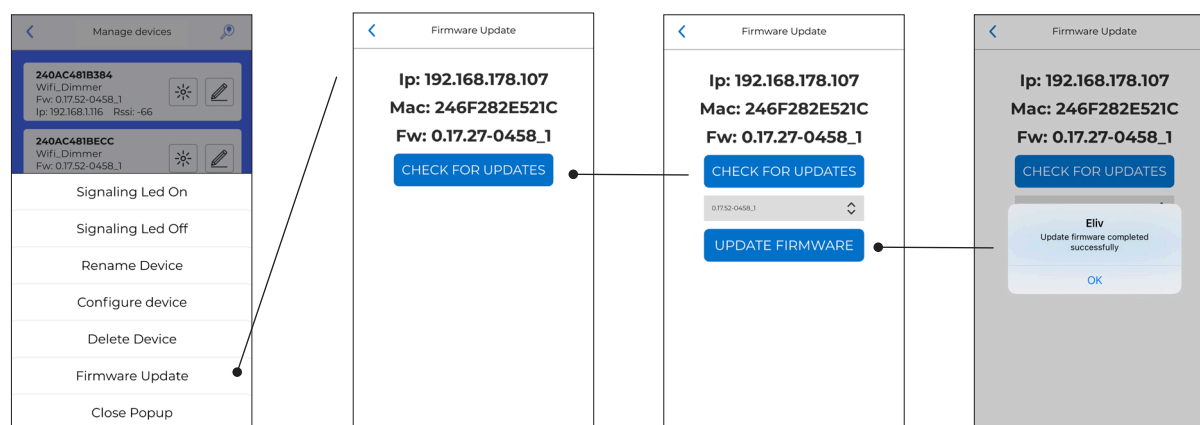
To send the scenario command to the system, just tap on the icon corresponding to the desired scenario. When the system is first configured, 2 scenarios will be created automatically, turn everything on and off.



Single device configuration - Firmware update

The Eliv application allows you to update the firmware of Eliv devices by checking directly online.

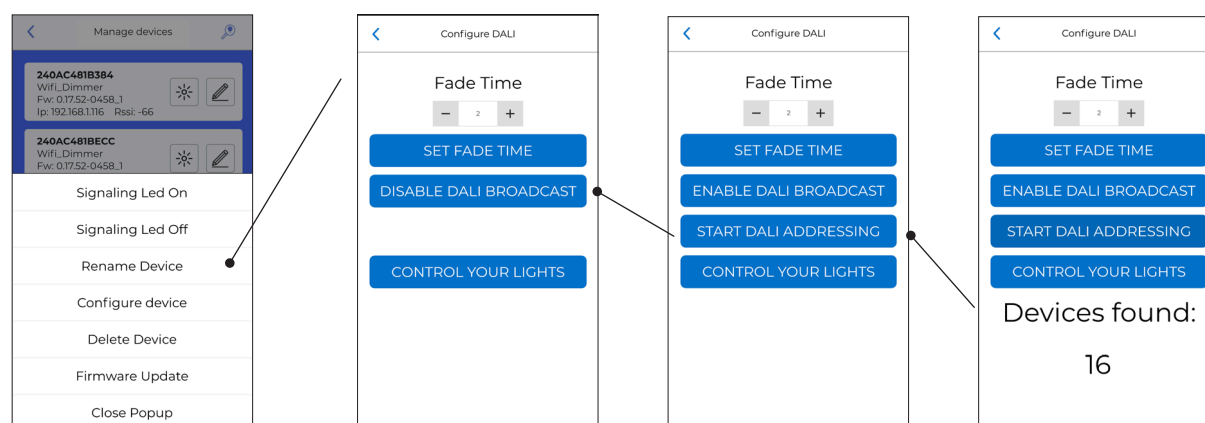
Attention during the procedure do not remove the voltage to the device could be damaged.



Configuration of single device - DALI addressing (only for ELIV.DALI.ADD devices)

This procedure allows you to address up to 16 DALI devices through the ELIV.DALI.ADD product.

This factory setting device works by sending broadcast commands on the DALI bus, to change the mode and address up to 16 DALI devices follow the procedure below.



The device is also able to set the Fade Time at the start. The Fade time command is sent when the device.



ELIV is a registered trademark of

RETE DI IMPRESE LUCE IN VENETO
Via dei Marcello n°13/11, 35017
Levada di Piombino Dese (PD) Italy
P.IVA/VAT: IT04960540286

Tel/Fax: +39 049 9350457
Email: info@luceinveneto.com
PEC: luceinveneto@legalmail.it